

# OPTIMEL™ EYE CARE

Optimel™ eye care products have been developed using proprietary pharmaceutical grade honey from *Leptospermum* spp. (Manuka AUS/NZL).  
Optimel Manuka+ Forte Eye Gel is preservative free.

## Suitable for:

- ✓ Evaporative dry eye
- ✓ Meibomian Gland Dysfunction (MGD)
- ✓ Aqueous tear deficiency

Optimel eye care treatments are effective as adjunctive therapies for meibomian gland dysfunction, reducing conjunctival and lid margin redness and improving meibomian gland secretion quality<sup>(1)</sup>.



**MODERATE TO SEVERE DRY EYE**  
(PRESERVATIVE FREE)



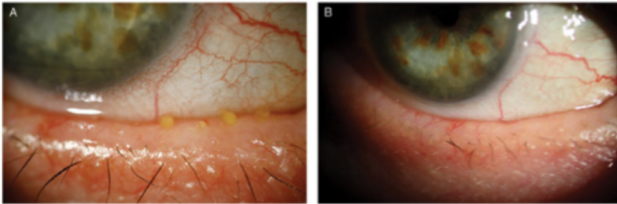
**MILD TO MODERATE DRY EYE**

# OPTIMEL™ EYE CARE

Optimel™ honey eye products provide a transient low pH, hyperosmotic environment and are associated with spontaneous tearing and autonomic blinking that rapidly displaces the honey to the eyelid margin while flushing the eye surface.

The honey aids eye lid-margin hygiene – as a humectant, any “crust” formed in the presence of honey is more likely to be soft and soluble, with the low pH environment limiting bacterial growth thereby reducing lid margin bacteria and the consequential inflammation around the meibomian gland ducts.

Inferior lid margin of a participant before (A) and after (B) eight weeks of Optimel Manuka+ Dry Eye Drops applied twice daily, as an adjunctive treatment to warm compress therapy and eyelid massage. Reduced conjunctival and lid margin redness and improved meibomian gland secretion quality were observed with the Optimel treatment.<sup>1</sup>



1. Albietz JM, Schmid KL., Randomised controlled trial of topical antibacterial Manuka (*Leptospermum* species) honey for evaporative dry eye due to meibomian gland dysfunction, *Clin. Exp. Optom.* (2017); Nov;100(6):603-615.
2. George N, Cutting K. Antibacterial Honey: in-vitro Activity Against Clinical Isolates of MRSA, VRE, and Other Multiresistant Gram-negative Organisms Including *Pseudomonas aeruginosa*. *Wounds.* (2007);19(9):231-236.
3. Albietz JM, Lenton LM. Standardised antibacterial Manuka honey in the management of persistent post-operative corneal oedema: a case series. *Clin Exp Optom* (2015); 98: 464-472.



## PRECAUTIONS

- Single patient use only.
- Stinging and redness after application for several minutes is to be expected. Close eye until stinging subsides.
- DO NOT use if hypersensitive to bee products or food gums.
- Wait at least 10 minutes before contact lens insertion.
- Do not use if box seal is broken or packaging is damaged.
- Discard 2 months after opening.

## DIRECTIONS Optimel Manuka Forte Eye Gel

Gently apply along lower lid margin using cotton tip.



## DIRECTIONS Optimel Manuka+ Dry Eye Drops

Place drop on inside of lower lid margin.



**THE BODY DOCTOR.** +

**Life. Health. Wellness.**

Celebrating **10** YEARS in Eye Care



ward hadoway **FASTEST 50** YORKSHIRE (YORKSHIRE POST)

Yorkshire Fastest 50 company 2022

• The Body Doctor Ltd, Unit 1 Bridge Industrial Estate, Off Park Mill Way, Clayton West, Huddersfield HD8 9XJ

e sales@the-body-doctor.com

t +44 (0) 1484 868 816

w the-body-doctor.com